

# 400SFR-B

## INTERFACE C2 EQUIPMENT BUSHING

### APPLICATION

For use in equipment insulated with SF<sub>6</sub> gas.

### TECHNICAL CHARACTERISTICS

Each bushing is tested for AC withstand and partial discharge prior to leaving the factory.



### DESIGN

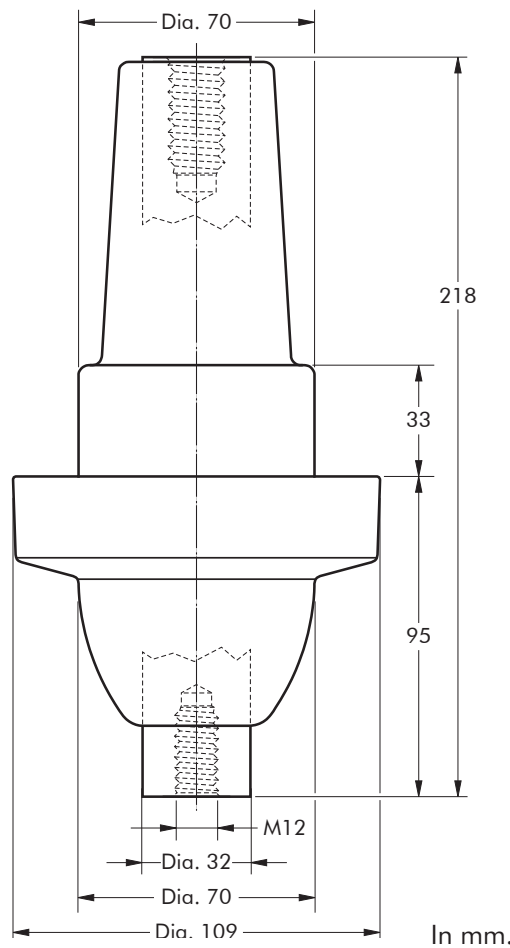
The equipment bushing is a moulded epoxy insulated part with a connector interface in accordance with CENELEC EN 50181. The 400SFR-B bushing has a shank outside this standard, adapted to use in SF<sub>6</sub> gas.

### SPECIFICATIONS AND STANDARDS

The bolted type equipment bushing 400SFR-B meets the requirements of CENELEC EN 50180 and IEC 60137.

### ORDERING INSTRUCTIONS

To order the equipment bushing, simply specify the type.



6/10 (12) kV  
6.35/11 (12) kV  
8.7/15 (17.5) kV  
12/20 (24) kV  
12.7/22 (24) kV  
18/30 (36) kV  
19/33 (36) kV

Up to 36kV - 1250 A

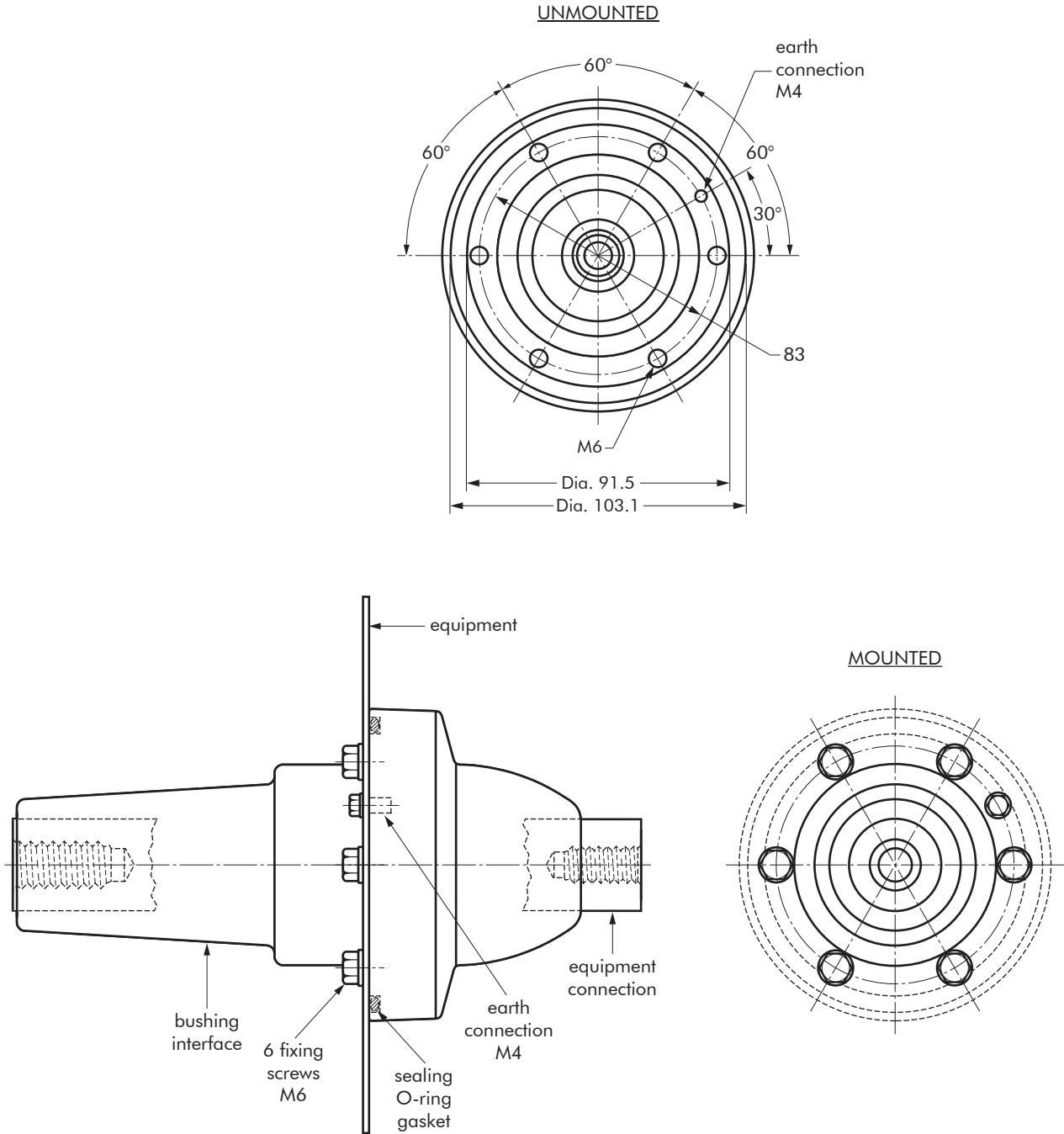
**EUROMOLD®**

Equipment bushing type	Voltage Um (kV)	Interface	Current Ir (A)
400SFR-B 1250 A	12	C2	1250
K400SFR-B 1250 A	24	C2	1250
M400SFR-B 1250 A	36	C2	1250

05/2017

# FIXINGS FOR EQUIPMENT BUSHINGS

## 400SFR-B BUSHING FOR GAS INSULATED SWITCHGEAR



In mm.